

SLOUGH MULTIFUEL EXTENSION PROJECT

[PINS Ref: EN010129]

Drawings and Plans

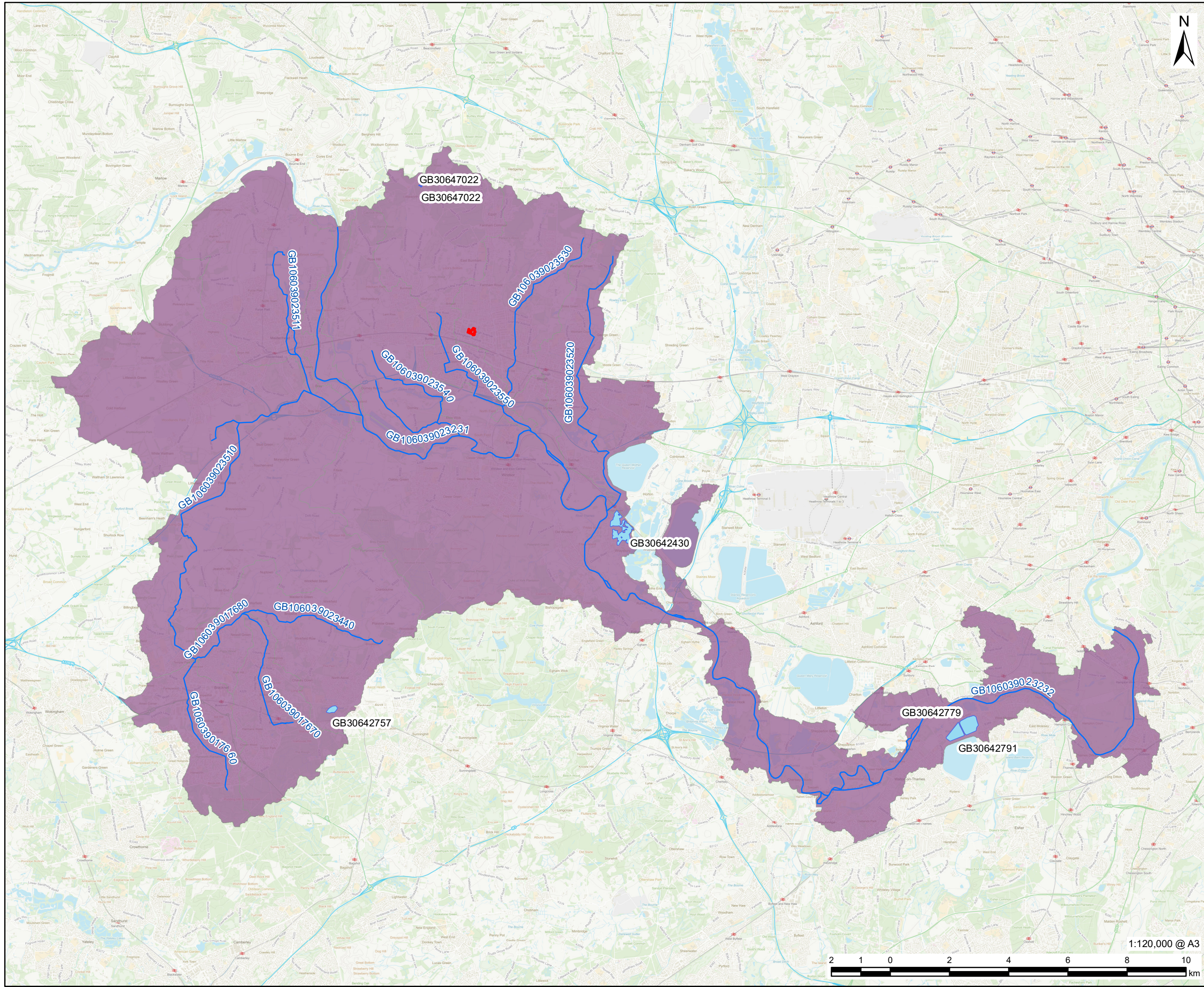
Water Bodies in a river basin management plan

Application Document Reference: [4.8]

APFP Regulations 5(2)(i)

Revision Number: 1.0

Planning Act 2008
Infrastructure Planning (Applications: Prescribed
Forms and Procedure) Regulations 2009



PROJECT



CLIENT

SSE Slough Multifuel

CONSULTANT

3rd Floor, Portwall Place
Portwall Lane
Bristol
BS1 6NA
aecom.com

LEGEND

- Proposed Project Site Boundary
- Maidenhead and Sunbury
- Lake Waterbodies
- River Waterbodies

WFD River Waterbody Catchments Cycle 2

NOTES

Reproduced from Ordnance Survey digital map data © Crown copyright [2021]. All rights reserved. Licence number 0100031673.
© Natural England copyright. Contains Ordnance Survey data © Crown copyright and database right 2022.

ISSUE PURPOSE

Environmental Statement
APFP Regulation 5(2)(l)(iii)

PINS REFERENCE NO.

EN010129

FIGURE TITLE

Plan of water bodies in a river basin management plan

FIGURE NUMBER

Figure 4.8

This drawing has been prepared for the use of AECOM's client. It may not be used, modified, reproduced or relied upon by third parties, except as agreed by AECOM or as required by law. AECOM accepts no responsibility, and denies any liability whatsoever, to any party that uses or relies on this drawing without AECOM's express written consent. Do not scale this document. All measurements must be obtained from the stated dimensions.